



Robotic Processing Automation (RPA) in Tarrant County

Judicial Council

April 26, 2024

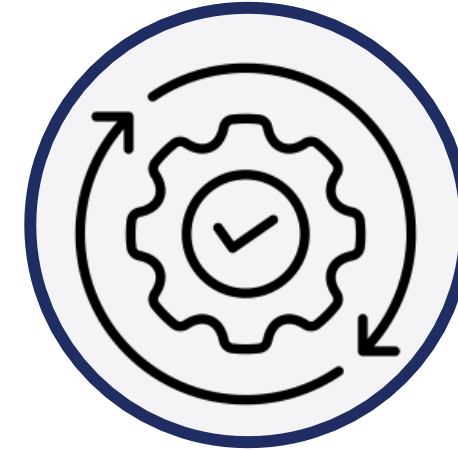
Document Understanding



- Downloads and reads documents
- Categorizes documents by content and structure
- Extracts specific data elements from documents for processing



eFile Processing



- Runs validation rules for accuracy
- Maps standard filing codes to local codes
- Updates filing description
- Moves stamps to whitespace
- Accepts, rejects, or returns filings

Process Filings 24 Hours a Day, 7 Days a Week, 365 Days a Year



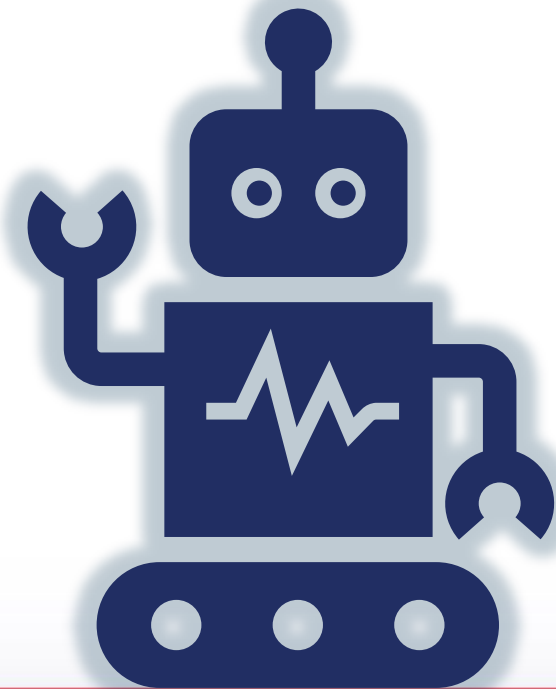
Reduce manual document review duration and backlog



Minimize data entry errors



Achieve same day processing



1

Robot 1 monitors the eFileTexas Review Queue for new filings and locks them for automated review

2

Robot 2 Gathers envelope details, downloads the PDF document, and performs document classification

3

Robot 3 Compares the data submitted in the filing with the data within the document to determine what actions to take

4

Robot 4 Performs the updates needed in eFileTexas and takes action on the envelope (accept / return / reject)

5

Robot 5 Performs the docketing updates needed in the clerk's local CMS to further reduce the clerks' workload



PALM BEACH COUNTY, FLORIDA



Meaningful Annual Savings
\$1.9 Million



AI Processes Filings
5x Times Faster



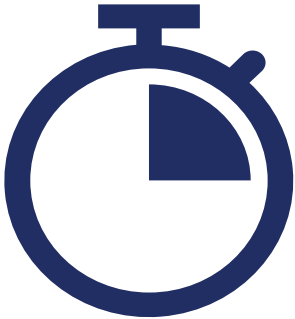
Hands Off Processing
Over 40% of Filings



TARRANT COUNTY, TEXAS



**Proactively Identifies
Errors** and Extracts
eFiling Data



48-Hour eFile Intake Period
Reduced to Minutes



Improved Quality Control
Before CMS Transfer



National Achievement Award Recipient



How did it come to fruition?

- Early conversation to add CSI to our technology portfolio began in 2018.
- Mandate to recover as quickly as possible from the Covid-19 pandemic that thrust our typical bureaucratic RFQ process to a full-scale government life cycle: RFP → Award of the contract → Implementation of the software

How did we achieve our success?

- Fully committed partners.
- The complexity of AI to perform intelligent document processing (IDP) requires full commitment from the vendor (Tyler), Information Technology leadership (dedicated IT resources) and the customer (County Clerk SMEs designated to the BA process).

Results

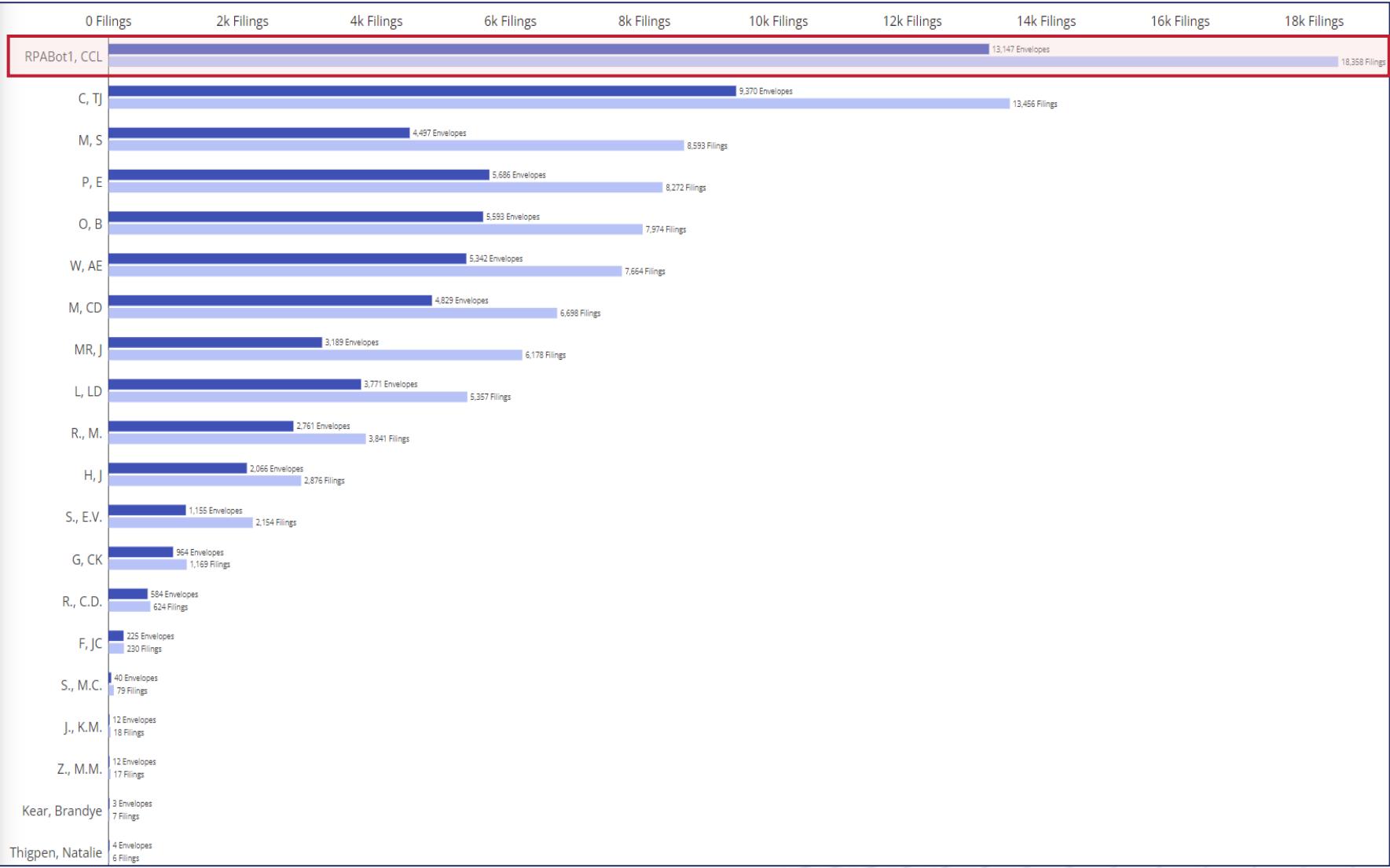
Our Bots (*Skynet, R2D2 and Optimus Prime*) were mandated to take weekends off because the humans (attorneys, judges, and clerk staff) were needing time to catch up!



Automated eFiling Workflow Demonstration

[Video Demonstration Link](#)

Automation Performance – Tarrant County CCL



Tarrant County – County Courts at Law (1, 2, & 3)

Results (April 2023 – April 2024):

- 93,593 filings
- 63,262 envelopes

Robot was top producing resource in office (out of 26) in terms of envelopes and filings worked:

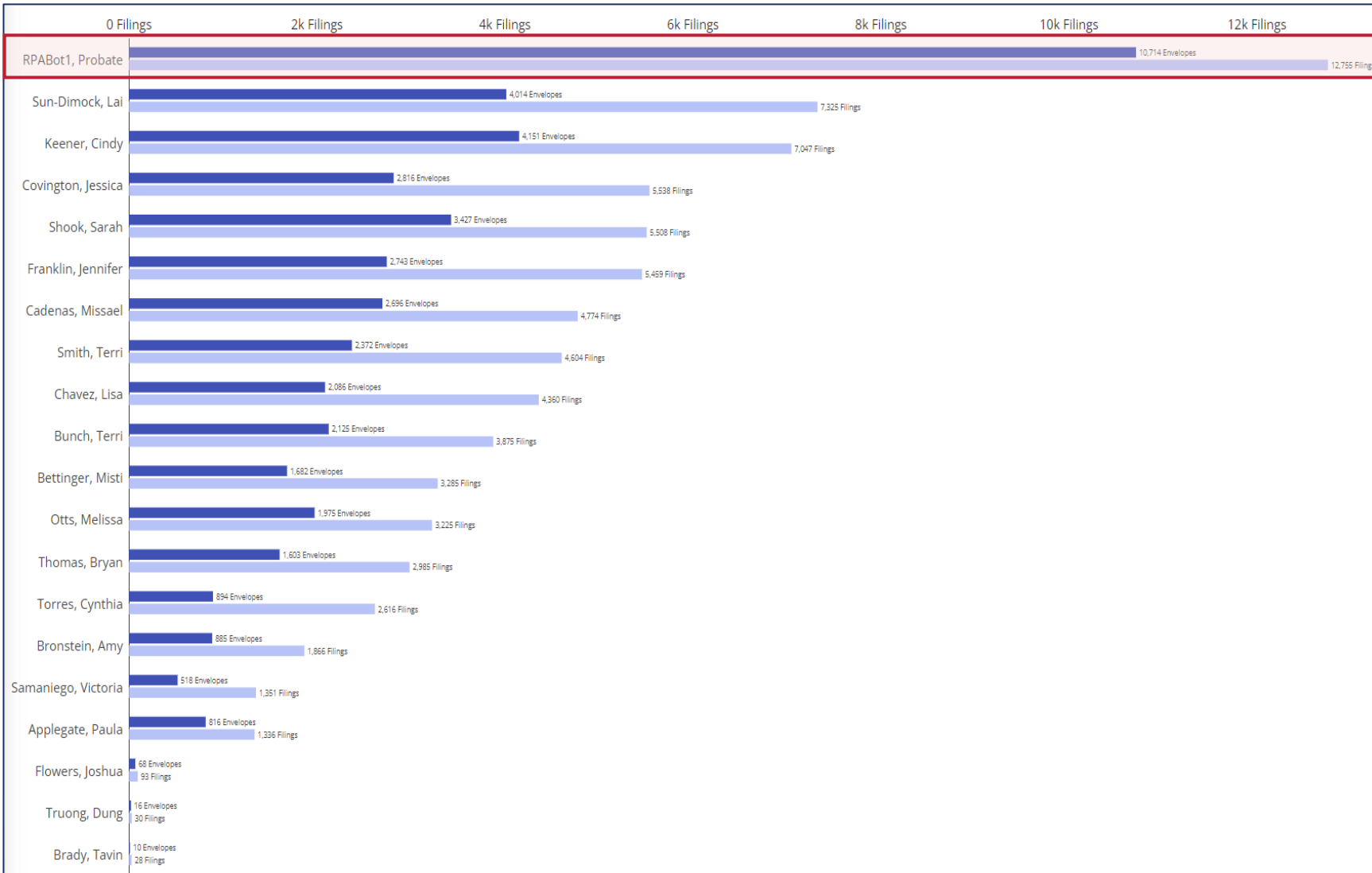
- 18,358 filings (19.61%)
- 13,147 envelopes (20.78%)

94% are processed in under 24 hours

Only 1.19% of filings returned

- 220 out of 18,358

Automation Performance – Tarrant County Probate



Tarrant County – Probate Courts (1 & 2)

Results (April 2023 – April 2024):

- 78,064 filings
- 45,581 envelopes

Robot was top producing resource in office (out of 22) in terms of envelopes and filings worked:

- 12,755 filings (16.34%)
- 10,714 envelopes (23.50%)

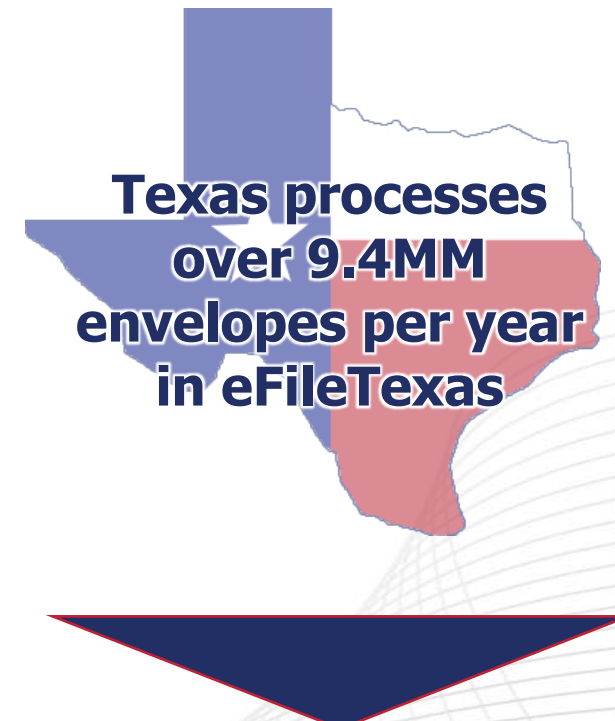
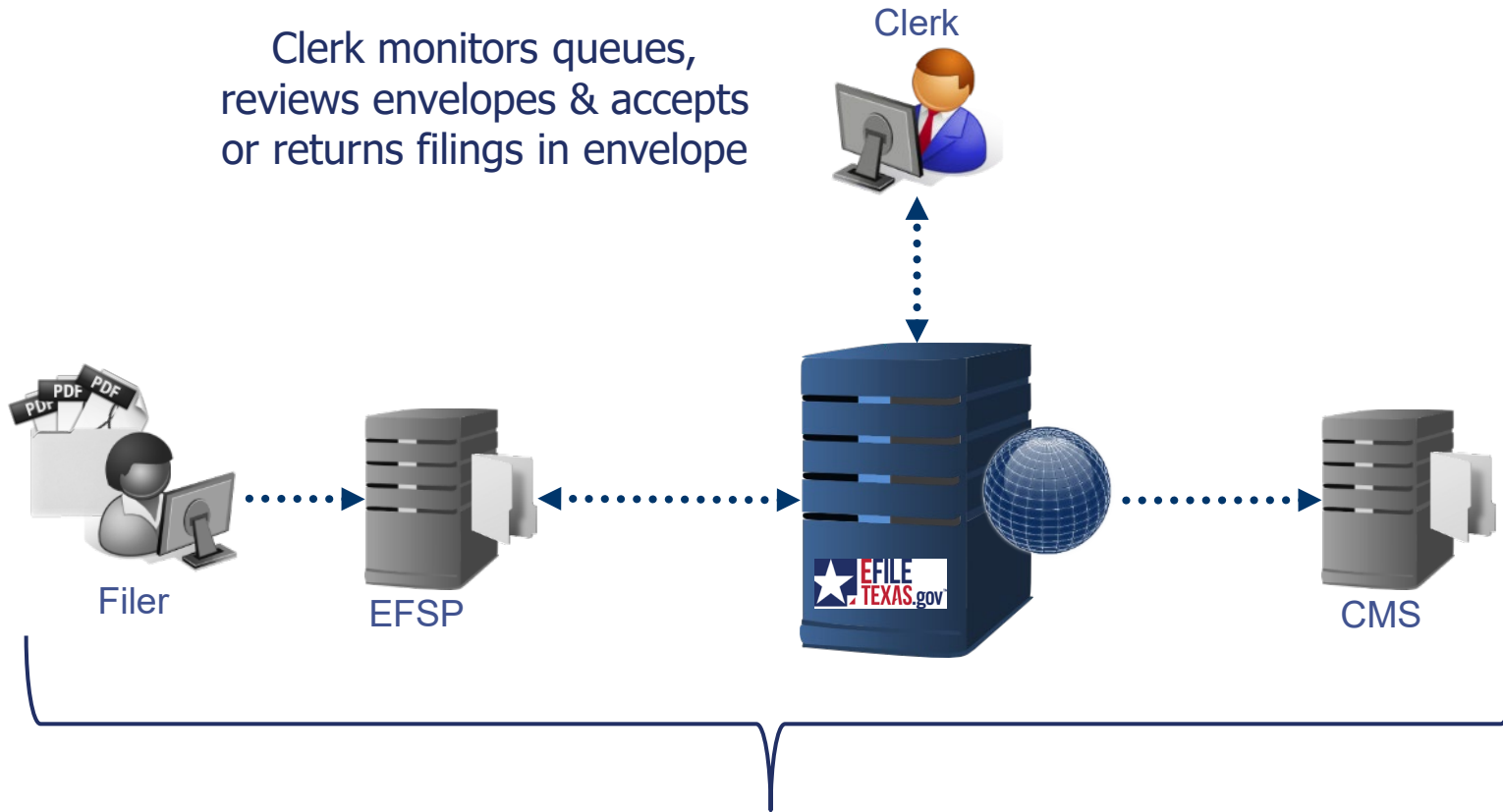
90% are processed in under 24 hours

Only 1.78% of filings returned

- 228 out of 12,755

Time Savings for Texas

Clerk monitors queues,
reviews envelopes & accepts
or returns filings in envelope



**Average duration for clerk to review and
process an envelope within eFileTexas is 2.15
minutes**

**Over 161 FTEs time is
spent reviewing filings
in eFileTexas each year**



Appendix

Other Jurisdictions Currently Implementing



Dallas County, Texas

County Seat: Dallas

Population: 2.61m

Annual Filing Volume: 983k

***Expected Annual Savings:** Over \$650k



Lake County, Illinois

County Seat: Waukegan

Population: 709k

Annual Filing Volume: 277k

***Expected Annual Savings:** Over \$135k

*Assumes clerk compensation of \$50k/year